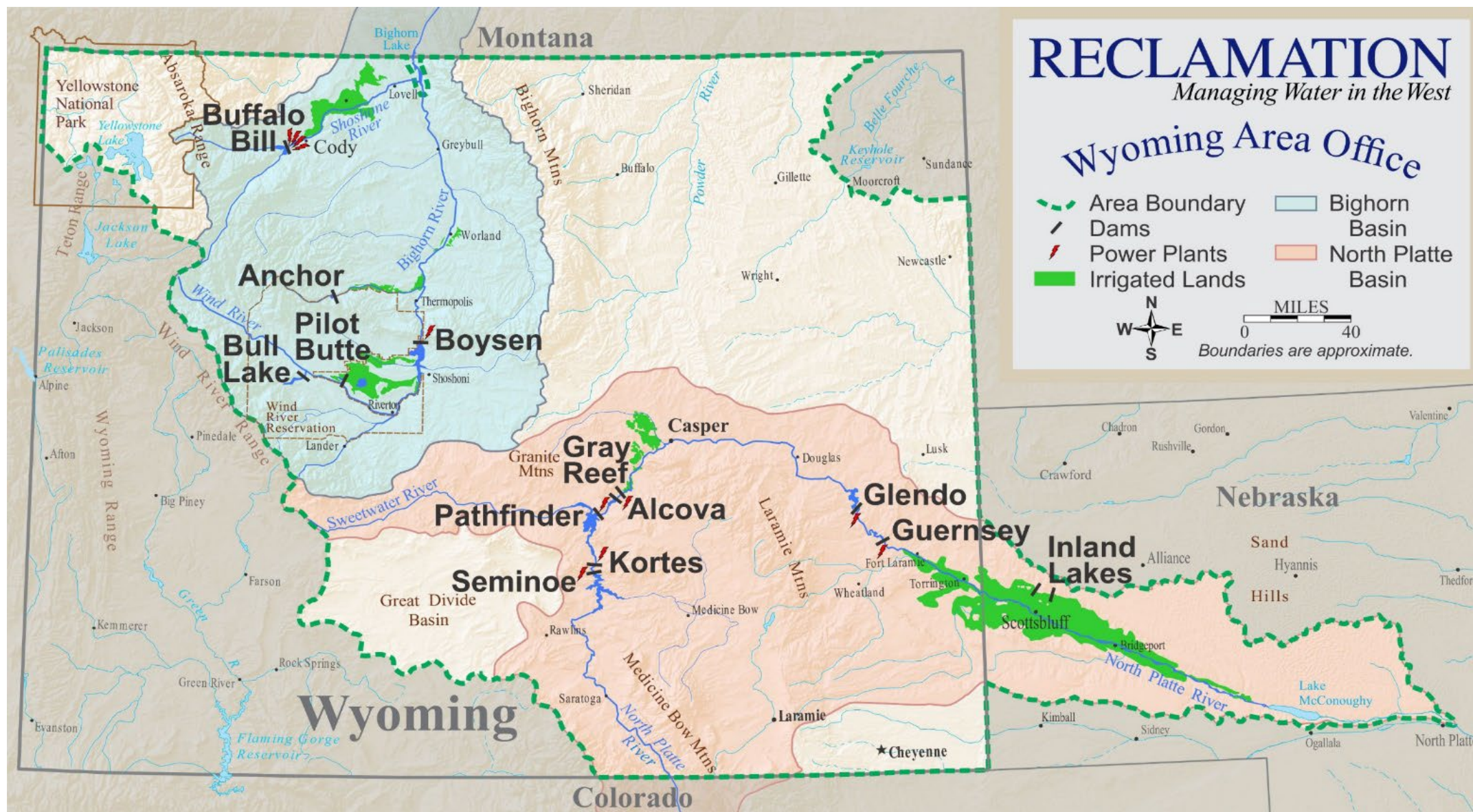




BUREAU OF  
RECLAMATION

**North Platte River Basin Water Supply and Utilization Report**  
**Wyoming Area Office**  
**Report for May 2026**



The Wyoming Area Office of the Bureau of Reclamation is responsible for the operation of Reclamation reservoirs in Wyoming east of the Continental Divide except for Keyhole Reservoir. Four off-stream reservoirs in Nebraska commonly referred to as the Inland Lakes also fall within the Wyoming Area. The North Platte River Basin Reservoirs have a combined storage capacity of 2,800,000 acre-feet. The major reservoirs in the Shoshone and Wind/Bighorn Basins have a combined storage capacity of 1,600,000 acre-feet.

**Report for May 2026**  
**WATER SUPPLY AND UTILIZATION REPORT**  
**NORTH PLATTE RIVER BASIN**  
**WYOMING AREA OFFICE**

**This report concerns the operation of Reclamation facilities in the North Platte River River Basins.**

**Reclamation defines a water year as the time period of October 1 through September 30. Water year is abbreviated in this report as W. Yr.**

**Other organizations furnished information for the Water Supply and Utilization Report. Their cooperation is greatly appreciated.**

**This report is available on the Internet and can be accessed by following these steps:**

- 1. Log on to the Missouri Basin and Arkansas-Rio Grande-Texas Gulf Regions Home Page at <http://www.usbr.gov/gp>**
- 2. Select Water Operations.**
- 3. Select Water Management Information.**
- 4. Select Water Supply Report.**
- 5. Under North Platte River Basin, select the current report or reports from the previous 12 months.**

## NORTH PLATTE RIVER BASIN INFLOW

**May Inflow and Historical Inflows, values in 1,000 acre-feet**

| Reservoir                 | W. Yr. 2026 <sup>6</sup> | 30 Yr. Avg. <sup>5</sup> | 30 Yr. Med. <sup>5</sup> | % of Med.  | W. Yr. 2025  | W. Yr. 2024  | W. Yr. 2023 |
|---------------------------|--------------------------|--------------------------|--------------------------|------------|--------------|--------------|-------------|
| Seminoe                   | 75.6                     | 235.9                    | 217.8                    | 35%        | 113.9        | 187.6        | 442.8       |
| Pathfinder <sup>1,2</sup> | 10.4                     | 21.6                     | 18.2                     | 57%        | 9.2          | 19.2         | 50.6        |
| Glendo <sup>3</sup>       | 4.1                      | 67.6                     | 61.7                     | 7%         | 14.6         | 66.9         | 118.2       |
| Guernsey <sup>4</sup>     | 0.2                      | 12.2                     | 10.0                     | 2%         | 12.5         | 3.3          | 10.9        |
| <b>System Total</b>       | <b>90.4</b>              | <b>337.4</b>             | <b>307.7</b>             | <b>29%</b> | <b>150.1</b> | <b>276.9</b> | <b>30.0</b> |

1 It is assumed that there is no gain between Seminoe and Kortez Dams.

2 River gain between Kortez and Pathfinder Dams.

3 River gain between Pathfinder and Glendo Dams.

4 River gain between Glendo and Guernsey Dams.

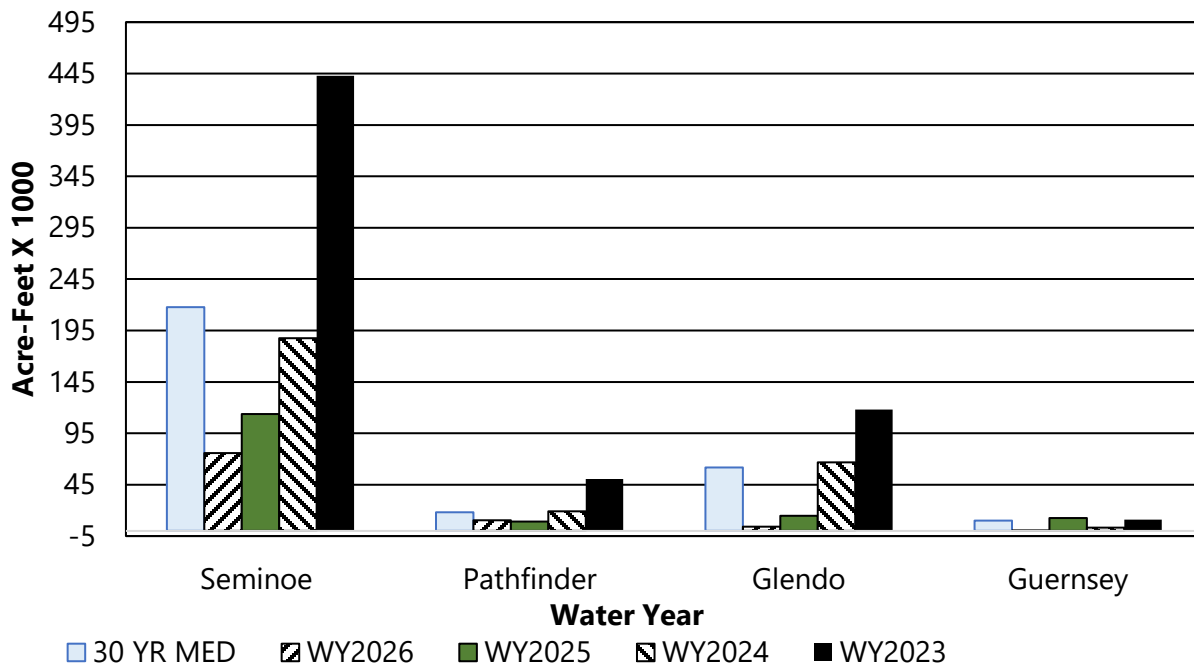
5 30 year average and median. (1996-2025)

6 W. Yr. 2026 covers the period October 1, 2025 to September 30, 2026.

**May Accumulated Water Year Inflows, values in 1,000 acre-feet**

| Reservoir                 | W. Yr. 2026 <sup>6</sup> | 30 Yr. Avg. <sup>5</sup> | 30 Yr. Med. <sup>5</sup> | % of Med.  |
|---------------------------|--------------------------|--------------------------|--------------------------|------------|
| Seminoe                   | 302.6                    | 529.0                    | 528.6                    | 57%        |
| Pathfinder <sup>1,2</sup> | 10.6                     | 73.4                     | 72.4                     | 15%        |
| Glendo <sup>3</sup>       | 50.8                     | 175.3                    | 171.6                    | 30%        |
| Guernsey <sup>4</sup>     | 6.1                      | 26.5                     | 26.3                     | 23%        |
| <b>System Total</b>       | <b>370.2</b>             | <b>804.2</b>             | <b>798.9</b>             | <b>46%</b> |

### MAY NORTH PLATTE RIVER BASIN RESERVOIR INFLOW



## NORTH PLATTE RIVER BASIN OUTFLOW

May Outflow and Historical Outflows, values in 1,000 acre-feet

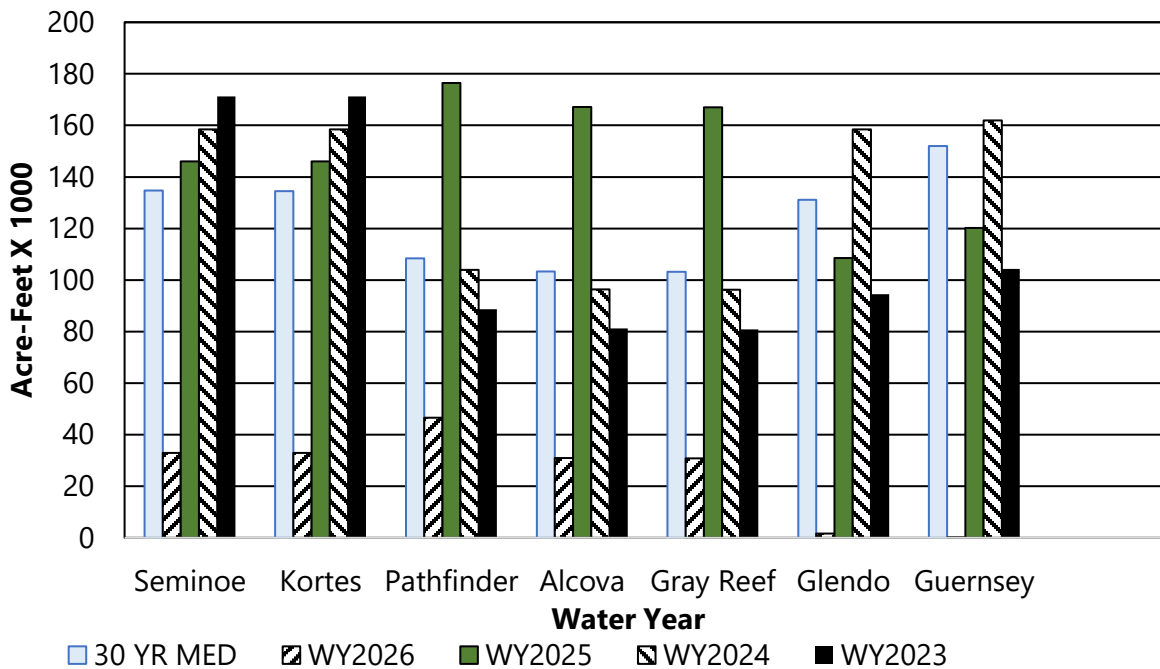
| Reservoir  | W. Yr. 2026 | 30 Yr. Avg. <sup>1</sup> | 30 Yr. Med. <sup>1</sup> | % of Med. | W. Yr. 2025 | W. Yr. 2024 | W. Yr. 2023 |
|------------|-------------|--------------------------|--------------------------|-----------|-------------|-------------|-------------|
| Seminole   | 32.9        | 139.4                    | 134.7                    | 24%       | 146.0       | 158.5       | 171.2       |
| Kortes     | 32.9        | 139.3                    | 134.5                    | 24%       | 146.0       | 158.5       | 171.2       |
| Pathfinder | 46.6        | 117.5                    | 108.4                    | 43%       | 176.4       | 104.0       | 88.6        |
| Alcova     | 30.9        | 107.5                    | 103.3                    | 30%       | 167.2       | 96.3        | 81.2        |
| Gray Reef  | 30.9        | 107.4                    | 103.2                    | 30%       | 167.0       | 96.3        | 80.9        |
| Glendo     | 1.6         | 134.0                    | 131.2                    | 1%        | 108.6       | 158.4       | 94.5        |
| Guernsey   | 0.1         | 142.4                    | 152.0                    | 0%        | 120.2       | 161.9       | 104.3       |

1 Average and median are based on the 1996-2025 period.

May Accumulated Water Year Outflows, values in 1,000 acre-feet

| Reservoir  | W. Yr. 2026 | 30 Yr. Avg. <sup>1</sup> | 30 Yr. Med. <sup>1</sup> | % of Med. |
|------------|-------------|--------------------------|--------------------------|-----------|
| Seminole   | 287.3       | 494.7                    | 469.6                    | 61%       |
| Kortes     | 287.2       | 494.6                    | 469.5                    | 61%       |
| Pathfinder | 271.4       | 408.5                    | 377.1                    | 72%       |
| Alcova     | 253.4       | 396.6                    | 367.7                    | 69%       |
| Gray Reef  | 253.2       | 396.3                    | 367.6                    | 69%       |
| Glendo     | 10.8        | 208.7                    | 174.1                    | 6%        |
| Guernsey   | 1.3         | 208.1                    | 184.5                    | 1%        |

### MAY NORTH PLATTE RIVER BASIN RESERVOIR OUTFLOW



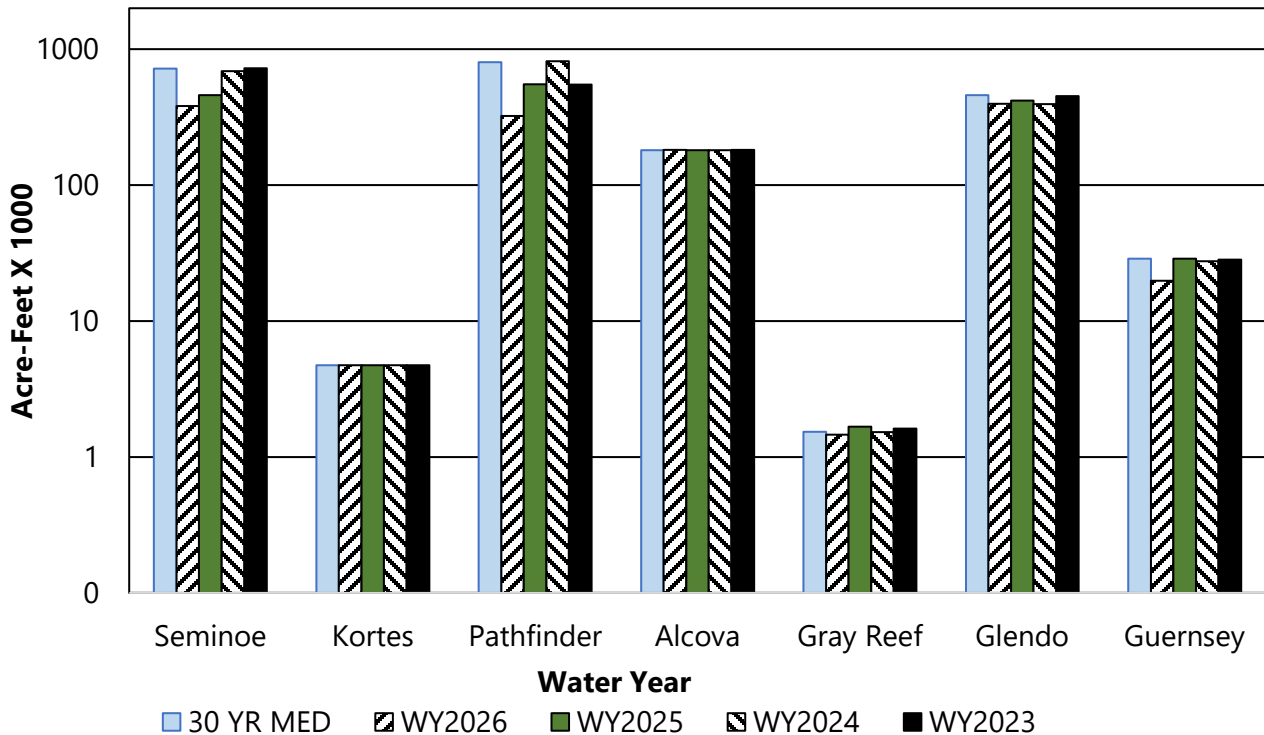
## NORTH PLATTE RIVER BASIN RESERVOIR STORAGE

May Storage, Historical Storage, and Storage Capacity in 1,000 acre-feet

| Reservoir    | W. Yr. 2026   | 30 Yr. Avg. <sup>1</sup> | 30 Yr. Med. <sup>1</sup> | % of Med.  | W. Yr. 2025   | W. Yr. 2024   | W. Yr. 2023   | Total Conservation Storage Capacity | Percent of Capacity |
|--------------|---------------|--------------------------|--------------------------|------------|---------------|---------------|---------------|-------------------------------------|---------------------|
| Seminole     | 381.2         | 643.9                    | 718.8                    | 53%        | 457.6         | 688.1         | 724.9         | 1017.3                              | 37%                 |
| Kortes       | 4.7           | 4.8                      | 4.7                      | 100%       | 4.7           | 4.7           | 4.7           | 4.7                                 | 100%                |
| Pathfinder   | 322.9         | 700.7                    | 801.9                    | 40%        | 551.1         | 814.8         | 547.7         | 1070.0                              | 30%                 |
| Alcova       | 181.6         | 180.3                    | 180.3                    | 101%       | 180.1         | 180.5         | 181.2         | 184.4                               | 98%                 |
| Gray Reef    | 1.5           | 1.5                      | 1.5                      | 95%        | 1.7           | 1.5           | 1.6           | 1.8                                 | 81%                 |
| Glendo       | 395.9         | 473.3                    | 457.7                    | 87%        | 418.6         | 393.7         | 450.4         | 492.0                               | 80%                 |
| Guernsey     | 19.8          | 29.7                     | 28.7                     | 69%        | 28.7          | 27.5          | 28.2          | 45.6                                | 43%                 |
| <b>Total</b> | <b>1307.6</b> | <b>2034.1</b>            | <b>2193.6</b>            | <b>60%</b> | <b>1642.5</b> | <b>2110.9</b> | <b>1938.8</b> | <b>2815.8</b>                       | <b>46%</b>          |

<sup>1</sup> Average is based on the 1996-2025 period.

### MAY NORTH PLATTE RIVER BASIN RESERVOIR STORAGE



## INLAND LAKES RESERVOIR STORAGE

**May Storage, Historical Storage, and Storage Capacity in acre-feet**

| Reservoir          | W. Yr.<br>2026 | 30 Yr.<br>Avg. <sup>5</sup> | 30 Yr.<br>med. <sup>5</sup> | % of<br>Med | Total Storage<br>Capacity |
|--------------------|----------------|-----------------------------|-----------------------------|-------------|---------------------------|
| Lake Alice         | 0              | 4,226                       | 4,208                       | 0%          | 11,034 <sup>1</sup>       |
| Little Lake Alice  | 124            | 317                         | 336                         | 37%         | 1,166 <sup>2</sup>        |
| Lake Winters Creek | 383            | 1,043                       | 1,163                       | 33%         | 1,746 <sup>3</sup>        |
| Lake Minatare      | 17,563         | 43,538                      | 48,615                      | 36%         | 58,795 <sup>4</sup>       |

1 At Elevation 4182.0

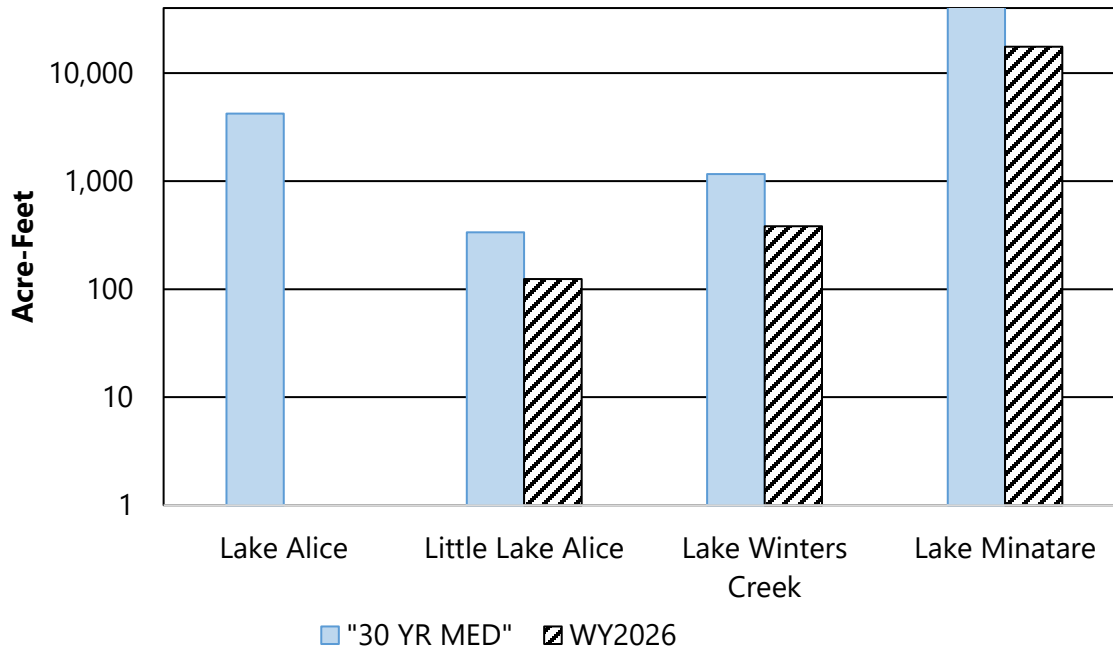
2 At Elevation 4139.0

3 At Elevation 4129.0

4 At Elevation 4125.0

5 30 year average. (1996-2025)

### MAY INLAND LAKES RESERVOIR STORAGE



## NORTH PLATTE RIVER BASIN RESERVOIR STORAGE OWNERSHIP

### May Ownership Storage, Historical Storage, and Storage Capacity in 1,000 acre-feet

| Reservoir                 | W. Yr. 2026 | 30 Yr. Avg. <sup>7</sup> | 30 Yr. Med. <sup>7</sup> | % of Med. | W. Yr. 2025 | W. Yr. 2024 | W. Yr. 2023 | Total Conservation Storage Capacity | Percent of Capacity |
|---------------------------|-------------|--------------------------|--------------------------|-----------|-------------|-------------|-------------|-------------------------------------|---------------------|
| Kendrick                  | 678.3       | 920.9                    | 942.5                    | 72%       | 800.8       | 890.7       | 807.5       | 1201.7                              | 56%                 |
| North Platte <sup>1</sup> | 509.5       | 904.2                    | 1020.2                   | 50%       | 704.5       | 1039.3      | 957.9       | 1115.6                              | 46%                 |
| Glendo                    | 97.6        | 150.0                    | 166.3                    | 59%       | 124.2       | 163.8       | 167.0       | 171.7                               | 57%                 |
| Inland Lakes <sup>2</sup> | 17.0        | 1.8                      | 0.0                      | NA        | 0.0         | 0.0         | 0.0         | 46.0                                | 37%                 |
| Cheyenne <sup>3,4</sup>   | 1.5         | 3.7                      | 3.8                      | 41%       | 3.7         | 4.5         | 4.2         | 15.7                                | 10%                 |
| PacifiCorp <sup>5</sup>   | 2.0         | 1.7                      | 2.0                      | 100%      | 2.0         | 1.2         | 2.0         | 2.0                                 | 100%                |
| Other <sup>6</sup>        | 1.9         | 51.2                     | 15.6                     | 12%       | 7.3         | 11.4        | 0.2         | N/A                                 | N/A                 |

1 This includes North Platte Guernsey and North Platte Pathfinder.

2 Water stored temporarily in mainstem facilities for later transfer to the Inland Lakes. This table does not reflect water currently stored in the Inland Lakes.

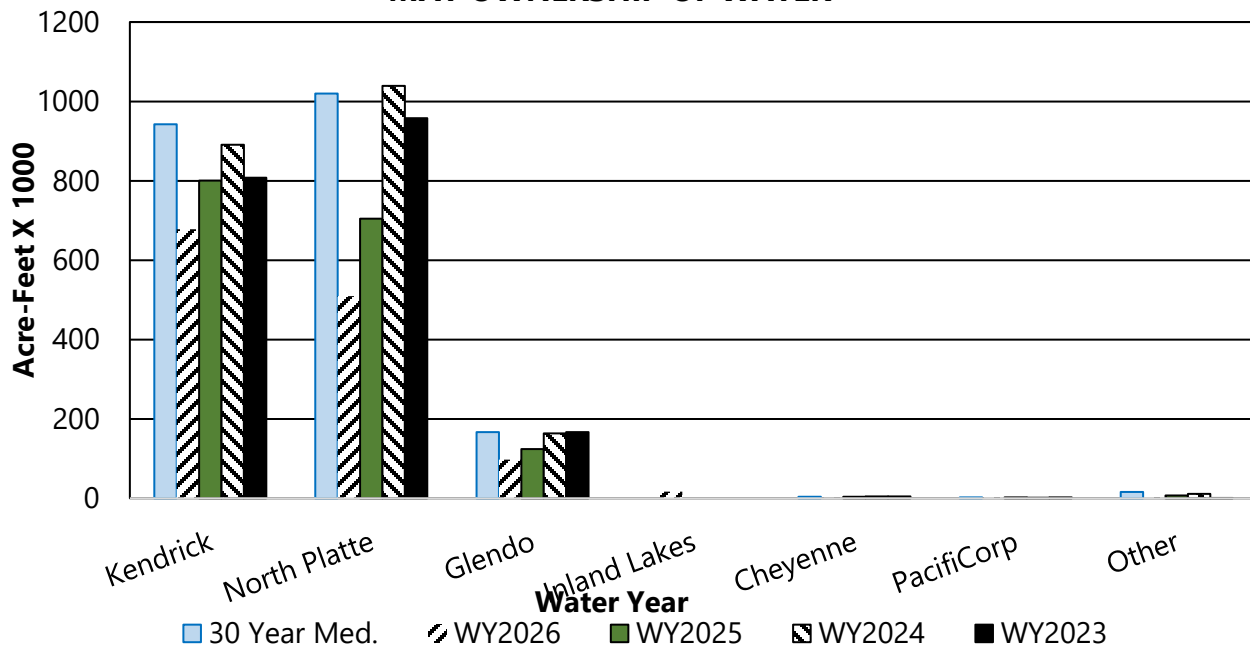
3 The City of Cheyenne has a storage contract to store water in Seminoe Reservoir by exchange of Upper North Platte Basin water through a system of trans-basin diversions.

4 Cheyenne ownership was increased to 15,700 AF on March 13, 2009 as a result of Amendment No. 1 to Contract No. 06XX6A0062.

5 PacifiCorp has a storage contract to store water in Glendo Reservoir for Dave Johnston Powerplant.

6 Water which is captured in the re-regulation space of Glendo in addition to storage rights, Operational water account, and replacement of evaporation losses is labeled as 'Re-regulation of Natural Flow' per Wyoming Board of Control Order Docket Number I-2000-3-8 in water Division Number One. In accordance with 2022 Natural Flow and Ownership Procedures, the Operational account can contain up to 15,000 acre-feet. On May 31, 2026, the Operational account contained 1,875 Acre-feet, the Re-Regulation space contained 0 Acre-feet.

### MAY OWNERSHIP OF WATER



## NORTH PLATTE RIVER BASIN GROSS GENERATION

### May Gross Generation and Historical Generation in Giga Watt Hours

| Powerplant                  | W. Yr. 2026 | 30 Yr. Avg. <sup>2</sup> | 30 Yr. Med. <sup>2</sup> | % of Med. | W. Yr. 2025 | W. Yr. 2024 | W. Yr. 20242 |
|-----------------------------|-------------|--------------------------|--------------------------|-----------|-------------|-------------|--------------|
| Seminole                    | 3.7         | 25.3                     | 21.7                     | 17%       | 21.7        | 25.3        | 26.1         |
| Kortes                      | 5.5         | 28.0                     | 25.6                     | 21%       | 25.6        | 28.0        | 29.4         |
| Fremont Canyon <sup>1</sup> | 10.4        | 27.3                     | 24.7                     | 42%       | 42.5        | 29.7        | 23.9         |
| Alcova                      | 3.3         | 13.6                     | 14.4                     | 23%       | 22.9        | 14.0        | 10.9         |
| Glendo                      | 0.0         | 13.4                     | 14.3                     | 0%        | 11.1        | 17.6        | 8.8          |
| Guernsey                    | 0.0         | 3.5                      | 3.6                      | N/A       | 4.1         | 4.0         | 4.3          |

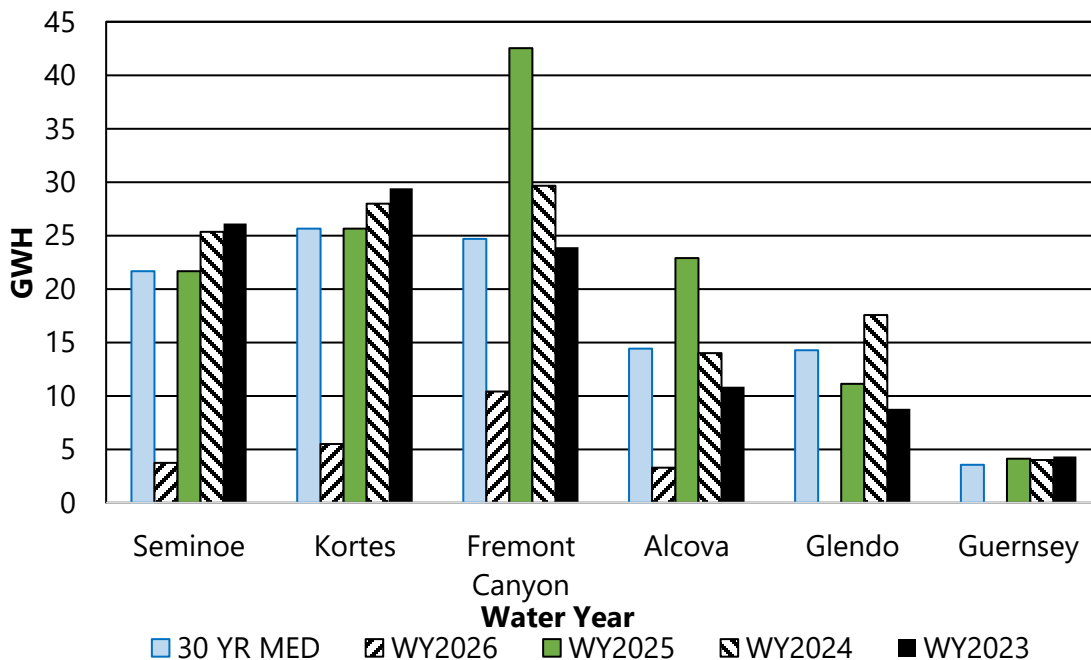
1 The powerplant for Pathfinder Dam is Fremont Canyon.

2 Average is based on the 1996-2025 period.

### May Accumulated Gross Generation Water Year in Giga Watt Hours

| Powerplant                  | W. Yr. 2026 | 30 Yr. Avg. <sup>2</sup> | 30 Yr. Med. <sup>2</sup> | % of Med. |
|-----------------------------|-------------|--------------------------|--------------------------|-----------|
| Seminole                    | 29.0        | 70.4                     | 65.7                     | 44%       |
| Kortes                      | 39.3        | 75.0                     | 76.4                     | 51%       |
| Fremont Canyon <sup>1</sup> | 59.5        | 95.2                     | 87.1                     | 68%       |
| Alcova                      | 25.6        | 45.7                     | 42.6                     | 60%       |
| Glendo                      | 0.0         | 19.6                     | 16.2                     | 0%        |
| Guernsey                    | 0.0         | 4.2                      | 5.5                      | 0%        |

## MAY NORTH PLATTE RIVER GROSS GENERATION



## NORTH PLATTE SNOWPACK WATER CONTENT

The tables shown below display the Snotel Sites used in the development of the April-July snowmelt runoff forecasts

June 1st Snow Water Equivalent

SWE in inches <sup>1</sup>

| WATERSHED            | W. Yr. 2026 <sup>3</sup> | 30 Yr. Median <sup>2</sup> | % of Median | W. Yr. 2025 | W. Yr. 2024 | W. Yr. 2023 |
|----------------------|--------------------------|----------------------------|-------------|-------------|-------------|-------------|
| Seminole Reservoir   | 2.8                      | 9.0                        | 31%         | 16.2        | 21.6        | 27.2        |
| Pathfinder Reservoir | 0.0                      | 2.1                        | 0%          | 15.7        | 17.5        | 20.5        |
| Glendo Reservoir     | 0.0                      | 0.0                        | NA          | 5.5         | 8.7         | 12.4        |

Seminole Reservoir Watershed

SWE in inches <sup>1</sup>

| Snotel Stations (Elevation) | Water Content <sup>3</sup> | 30 Yr. Median <sup>2</sup> |
|-----------------------------|----------------------------|----------------------------|
| Arapaho Ridge (10,960)      | 0.0                        | 11.2                       |
| Columbine (9,160)           | 0.0                        | 0.0                        |
| Divide Peak (8,880)         | 0.0                        | 0.0                        |
| Joe Wright (10,120)         | 0.0                        | 13.3                       |
| Laprele Creek (8,375)       | 0.0                        | 0.0                        |
| Never Summer (10,280)       | 4.5                        | 16.8                       |
| North French (10,130)       | 0.0                        | 19.8                       |
| Old Battle (10,000)         | 13.3                       | 25.3                       |
| Rawah (9,020)               | 0.0                        | 0.0                        |
| Sage Creek Basin (7,850)    | 0.0                        | 0.0                        |
| Sand Lake (10,050)          | 11.8                       | 23.2                       |
| South Brush (8,440)         | 0.0                        | 0.0                        |
| Tower (10,500)              | 15.7                       | 33.6                       |
| Webber Springs (9,250)      | 0.0                        | 0.0                        |
| Willow Creek Pass (9,540)   | 0.0                        | 0.8                        |
| Zirkel (9,340) <sup>4</sup> | 0.0                        | 0.0                        |
| Watershed Average           | 2.8                        | 9.0                        |

Sweetwater River / Pathfinder Reservoir Watershed

SWE in inches <sup>1</sup>

| Snotel Stations (Elevation) | Water Content <sup>3</sup> | 30 Yr. Median <sup>2</sup> |
|-----------------------------|----------------------------|----------------------------|
| Deer Park (9,700)           | 0.0                        | 3.8                        |
| South Pass (9,040)          | 0.0                        | 0.3                        |
| Watershed Average           | 0.0                        | 2.1                        |

Glendo Reservoir Watershed

SWE in inches <sup>1</sup>

| Snotel Stations (Elevation) | Water Content <sup>3</sup> | 30 Yr. Median <sup>2</sup> |
|-----------------------------|----------------------------|----------------------------|
| Casper (7,900)              | 0.0                        | 0                          |
| Laprele Creek (8,375)       | 0.0                        | 0                          |
| Reno Hill (8,500)           | 0.0                        | 0                          |
| Windy Peak (7,900)          | 0.0                        | 0                          |
| Watershed Average           | 0.0                        | 0.0                        |

<sup>1</sup> SWE (Snow Water Equivalent is the amount of water in the snowpack expressed in inches)

<sup>2</sup> Median for the 1991-2020 period

<sup>3</sup> Data from NRCS Snowpack Telemetry Network (SNOTEL) Sites.

<sup>4</sup> Zirkel is a newer gage starting WY 2003, NRCS median is 23 years of data within 1991-2020 time period.

**NORTH PLATTE ESTIMATED APRIL-JULY RUNOFF**

(1000 acre-feet)

| Forecast Points                                   | June 1, 2026<br>Forecast of April-July Runoff |            |                                    | 30 Yr.<br>April-July<br>Runoff<br>Avg. <sup>2</sup> | 30 Yr.<br>Apr - Jul<br>Runoff<br>Med. <sup>2</sup> | Expected<br>% of Med. | Comparative Actual<br>April - July Runoff |                |                |
|---|---|------------|------------------------------------|---|--|-----------------------|---|----------------|----------------|
|   | Reasonable<br>Maximum <sup>1</sup>            | Expected   | Reasonable<br>Minimum <sup>1</sup> |   |  |                       | W. Yr.<br>2025                            | W. Yr.<br>2024 | W. Yr.<br>2023 |
|   | Seminole Reservoir                            | 221        | 161                                |   |  |                       | 141                                       | 705            | 643            |
| Sweetwater River<br>Above Pathfinder<br>Reservoir | 20  | 10         | 8                                  | 51  | 41   | 24%                   | 27  | 46             | 112            |
| Alcova to Glendo                                  | 20  | 12         | 10                                 | 135   | 121  | 10%                   | 48  | 98             | 227            |
| <b>Total</b>                                      | <b>261</b>                                    | <b>183</b> | <b>159</b>                         | <b>891</b>  | <b>805</b>   | <b>23%</b>            | <b>426</b>                                | <b>774</b>     | <b>1308</b>    |

<sup>1</sup> The probability is estimated to be 9 chances in 10 that the actual volume will fall between the reasonable minimum and reasonable maximum.

<sup>2</sup> Average and median is based on the 1996-2025 period.

(1000 acre-feet)

| Forecast Points                                   | June 1, 2026<br>Forecast of April-July Runoff<br>Chance of Exceeding |     |     |          |     |     | 30 Yr.<br>Apr - Jul<br>Runoff<br>Avg. <sup>2</sup> | 30 Yr.<br>Apr - Jul<br>Runoff<br>Med. <sup>2</sup> |
|---|--|-----|-----|----------|-----|-----|--|--|
|   | 95%  | 75% | 50% | % of Avg | 25% | 5%  |  |  |
|   | Seminole Reservoir   | 141 | 153 | 161      | 23  | 186 |  |  |
| Sweetwater River<br>Above Pathfinder<br>Reservoir | 8  | 9   | 10  | 20       | 14  | 20  | 51   | 41   |
| Alcova to Glendo<br>Gain                          | 10   | 11  | 12  | 9        | 15  | 20  | 135  | 121  |